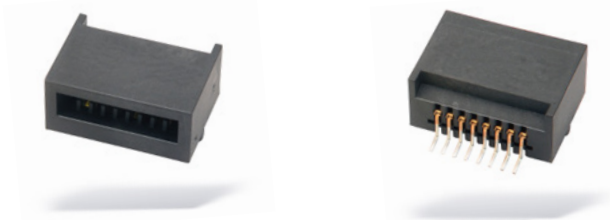


SR4230SM

Board-Mount Receptacles

SR4230SM board-mount receptacles mate with all Datakey SlimLine™, Extended SlimLine, NFX, and RUGGEDrive™ memory tokens (see token data sheets for more details). The SR4230SM receptacles feature a right-angle, board-edge design with surface-mount contacts. The receptacles can be pick-and-placed from their tray and are suitable for use in a reflow oven process.

As with all Datakey SlimLine token receptacles, this series features corrosion-resistant, gold-dot contacts that perform reliably over a wear life of at least 50,000 insertion/removal cycles. The design employs a wiping mechanism to remove any debris or build-up on the token's contacts each time the token is inserted or removed. The token/receptacle system also provides a Last-On/First-Off (LOFO) contact that is used by system designers to detect when a memory token has been inserted or removed (contact ATEK for token detection details for the NFX and RUGGEDrive memory tokens). The SR4230SM receptacle is a space-saving design that has removed the detent mechanism found on the SR4210SM and SR4220SM models, reducing the token retention. Since the SR4230SM contains no mounting flange, special care must be taken in the design of the mounting of these receptacles to ensure that excessive stress is not placed on the leads.



| MECHANICAL | |
|-------------------------------------|--|
| Contact Life | 50,000 Insertion/Removal Cycles Min. |
| Insertion Force | 400 gf Min. / 2 kgf Max. |
| ELECTRICAL | |
| Contact Resistance | Beginning of Life: 100 mΩ End of Life: 500 mΩ |
| ENVIRONMENTAL | |
| Storage Temperature | -40°C to +105°C |
| Operating Temperature | -40°C to +85°C |
| Relative Humidity | 5% to 95% (non-condensing) |
| MATING COMPONENT(S) | |
| Tokens | All SlimLine, NFX, DFX and UFX Tokens |
| ORDERING INFORMATION ^{1,2} | |
| SR4230SM | 606-0057-004A |

- 1: "A" suffix on part number indicates RoHS compliance.
 2: Contact ATEK for part numbers of receptacles that ship in moisture bags (108/108 min/mult)
 3: RST signal used on IIT Series only.
- NOTES:
- Complete interface specifications available at www.datakey.com
 - Refer to recommended reflow instructions at www.datakey.com
 - Conforms with Directive 2011/65/EU of the European Parliament and of the Council of 8 June 2011 on the restriction of the use of certain hazardous substances in electrical and electronic equipment.



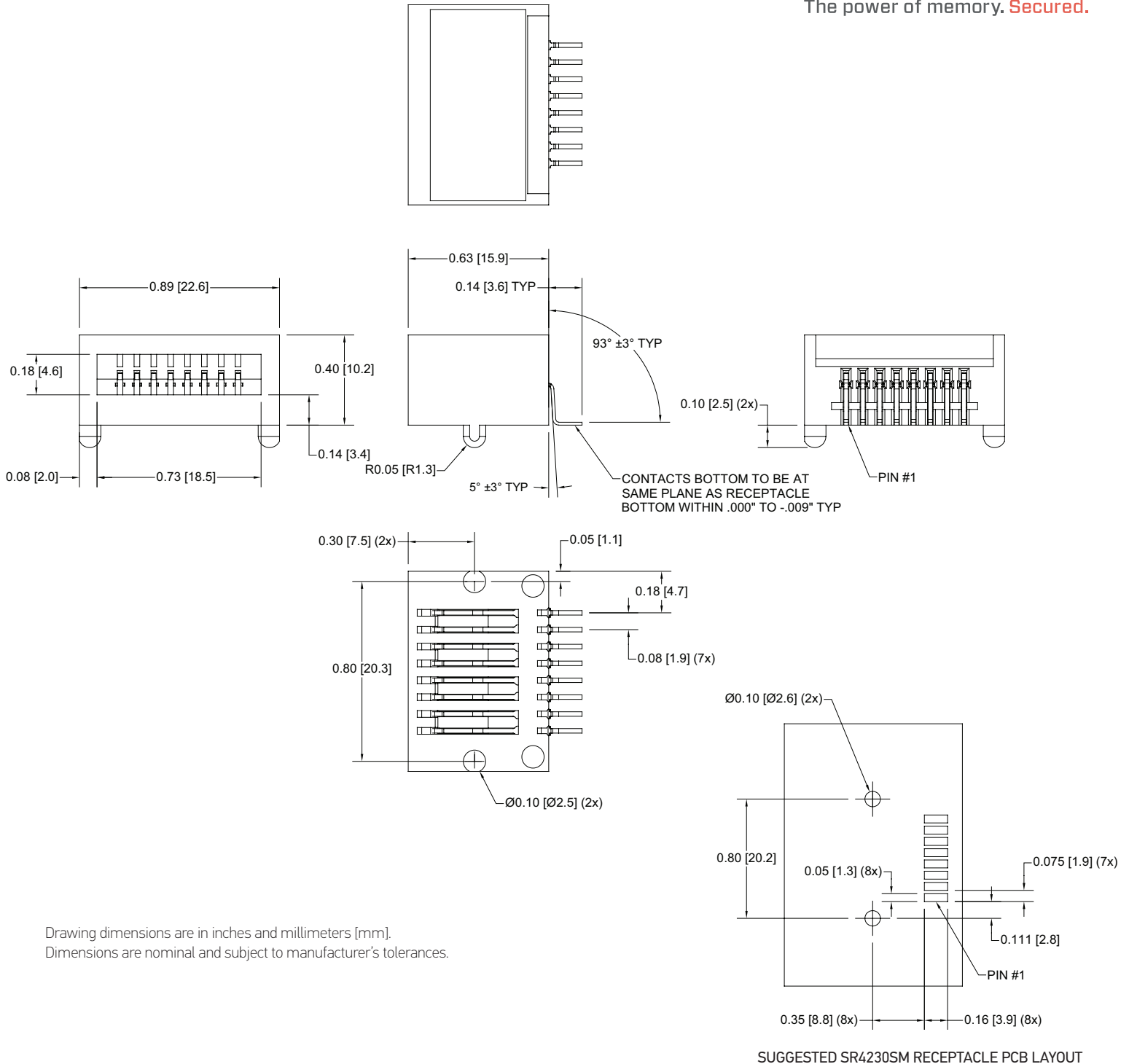
| PIN-OUT CHART | | | | | RUGGEDrive™ LINE | | |
|---------------|--------------------------|--------------------------|--------------------------|--------------------------|--------------------------|----------|-----------|
| Pin | Microwire | I ² C | SPI | NFX | DFX (SPI) | DFX (SD) | UFX (USB) |
| Pin 1 | LOFO | LOFO | /Hold | DP (USB) | Reserved | DAT1 | NC |
| Pin 2 | Power (V _{cc}) | Power (V _{cc}) | Power (V _{cc}) | Power (V _{cc}) | Data Out (DO) | DAT0 | +5V |
| Pin 3 | Chip Select (CS) | SIZE / RST ³ | /Chip Select (/CS) | /Chip Select (/CS) | Ground (GND) | VSS | NC |
| Pin 4 | Serial Clock (SK) | Serial Clock (SCL) | Serial Clock (SCK) | Serial Clock (SCK) | Serial Clock (SCLK) | CLK | DM |
| Pin 5 | Data In (DI) | NC | Data In (SI) | MOSI | Power (V _{cc}) | VDD | DP |
| Pin 6 | Data Out (DO) | Serial Add/Data (SDA) | Data Out (SO) | MISO | Data In (DI) | CMD | NC |
| Pin 7 | Ground (GND) | Ground (GND) | Ground (GND) | Ground (GND) | /Chip Select (/CS) | DAT3 | GND |
| Pin 8 | LOFO | LOFO | LOFO | DM (USB) | Reserved | DAT2 | NC |

NC = No Connection

SR4230SM



The power of memory. Secured.



Drawing dimensions are in inches and millimeters [mm].
Dimensions are nominal and subject to manufacturer's tolerances.

221-0206-000 Rev. A 6/18

View our full product line at www.datakey.com

ATEK Access Technologies
10025 Valley View Road, Ste. 190
Eden Prairie, MN 55344 U.S.A.

PH: 1.800.523.6996
FAX: 1.800.589.3705
+1.218.829.9797

www.atekaccess.com



Access the power of technology.