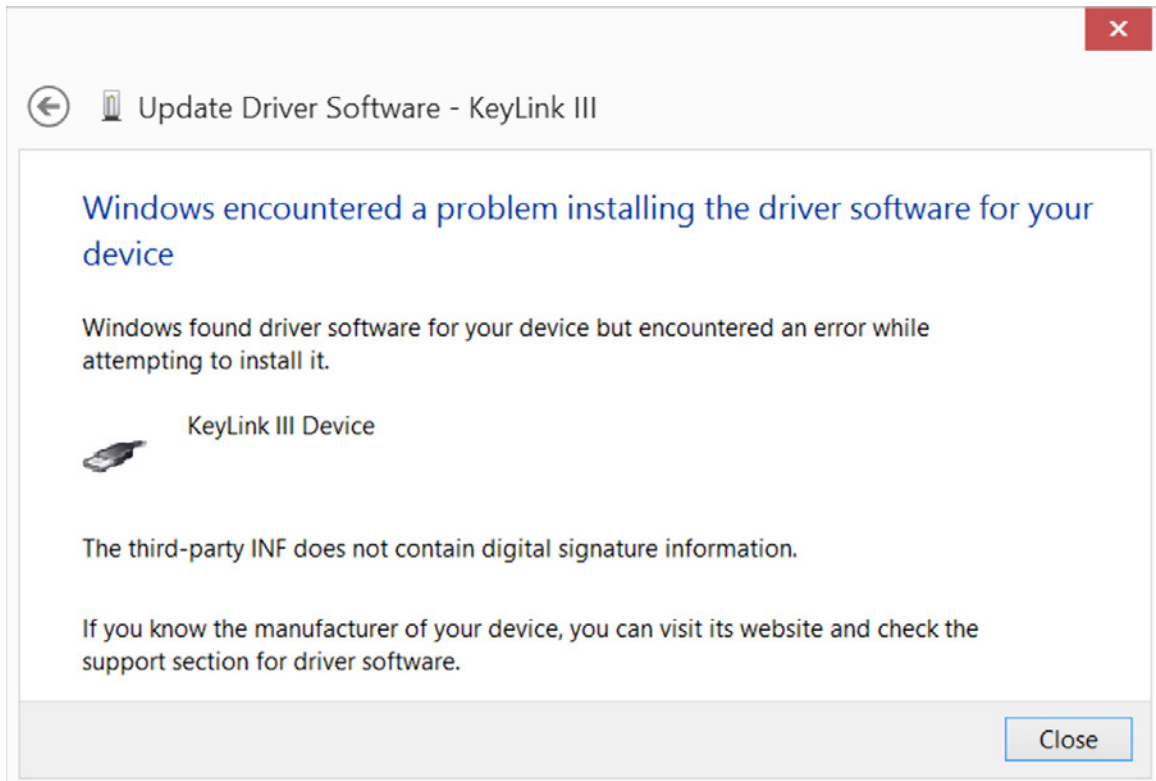


Windows 8.1 Driver Installation for Datakey Series III Programmers

By default, the Windows 8.1 operating system requires drivers to be signed. Currently, the Windows drivers for the Datakey Series III programmers (e.g. KeyLink III, SlimLink III, etc.) are not signed. Before installation, driver signature enforcement must be disabled. Failure to disable driver signature enforcement while attempting to install the Datakey driver, will produce the following message:



This document provides instructions to disable driver signature enforcement and then install the driver for the Datakey Series III programmers.

Disable Driver Signature Enforcement in Windows 8.1

(A quick way to skip steps 1-5 is to hold down the SHIFT key while clicking Restart)

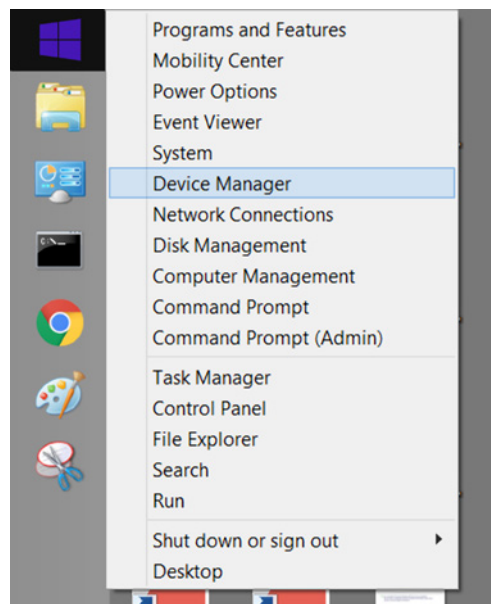
- 1** Simultaneously press the **WIN** (Windows logo key) and **C** keys to bring up the Charms Menu, then click on **Settings**. (If this does not work, point the mouse to the upper-right corner of the screen and move the mouse pointer down)
- 2** Click on **Change PC settings** at the bottom.
- 3** Click on **Update and Recovery**.
- 4** Click on the **Recovery** tab on the left hand side.

- 5 An advanced startup section will appear on the right hand side. Click on the **Restart now** button.
- 6 On the next screen choose the **Troubleshoot** option.
- 7 Click on **Advanced options**.
- 8 Click on **Startup Settings**.
- 9 Click on **Restart**, which will reboot the computer and display a list of startup settings that can be changed.
- 10 Press **7** or **F7** to choose **Disable driver signature enforcement**.

Driver Installation Instructions

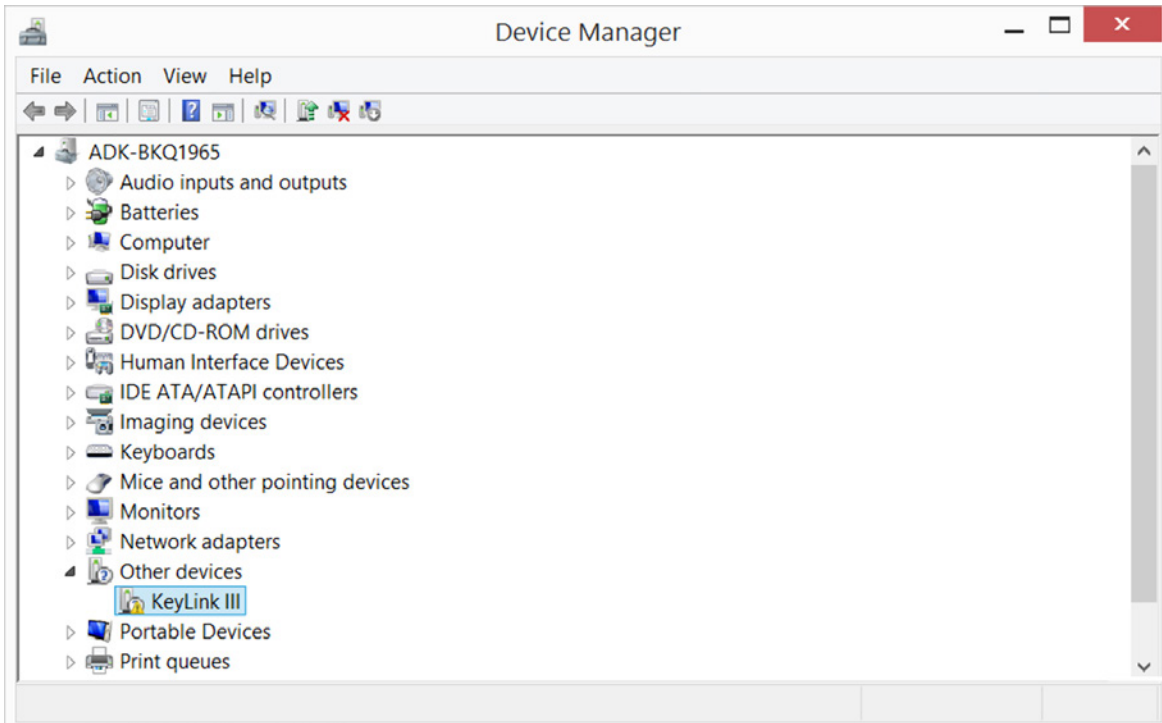
Now that Driver Signature Enforcement has been disabled, install the Datakey driver by following these instructions.

- 1 Plug in the Datakey Series III programmer to a USB port.
- 2 **Right-Click** on the **Start** button to bring up the menu shown below, then click on **Device Manager**.



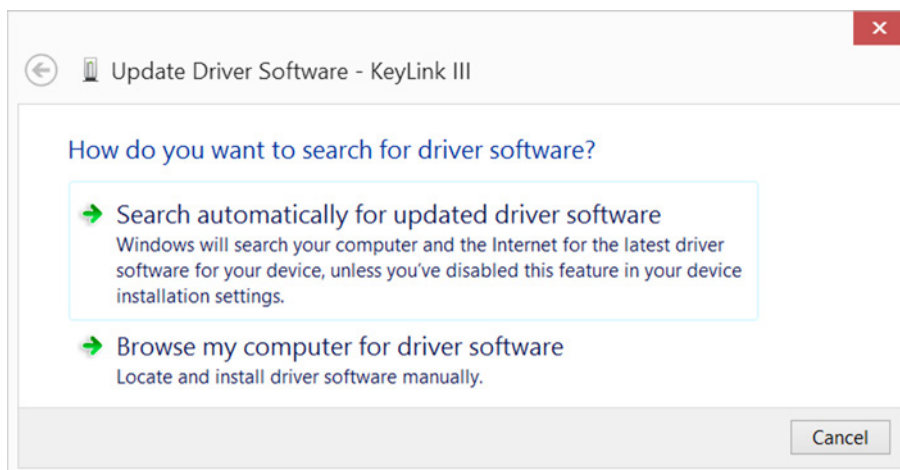
(If this menu does not appear, simultaneously press the **WIN** and **S** keys, then type **Device Manager**)

3 This will bring up a window similar to the one shown below.



The yellow warning indicator appears for the KeyLink III device, meaning that the driver is unavailable.

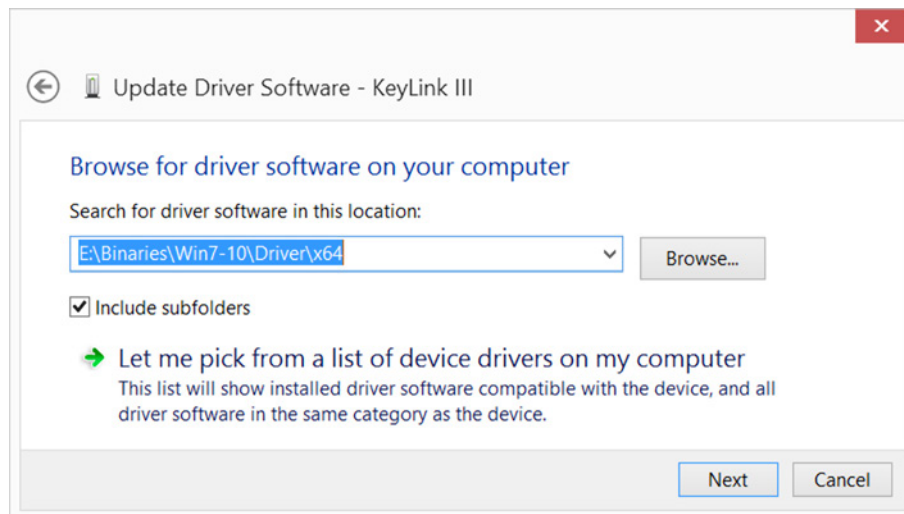
4 With the KeyLink III device selected (highlighted), click **Action** then **Update Driver Software**. This will launch the window below:



Select the bottom option to **Browse my computer for driver software** (manually).

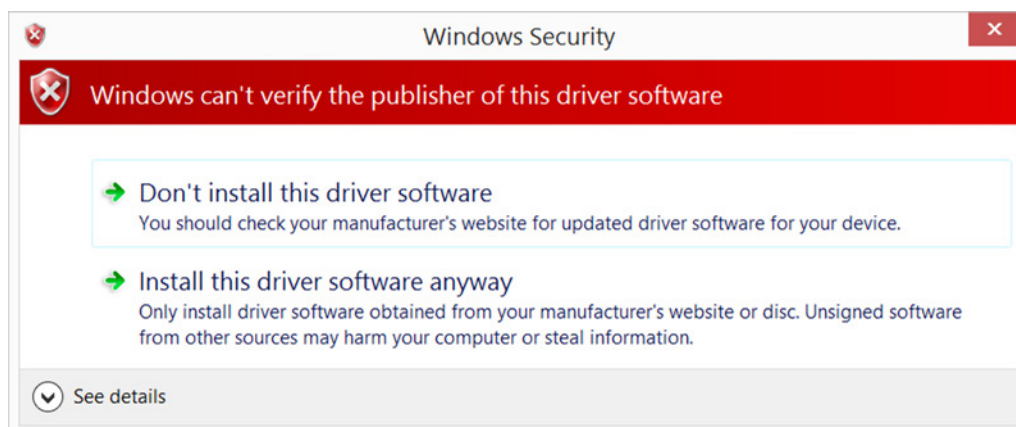
- 5** Insert the Installation CD for Series III Programmers. Click on the Browse button and navigate to the CD drive and select the following folder (provided installation is on a 64-bit computer): [Drive]:\Binaries\Win7-10\Driver\x64

If installation is on a 32-bit computer, use the following folder:
[Drive]:\Binaries\Win7-10\Driver\x64



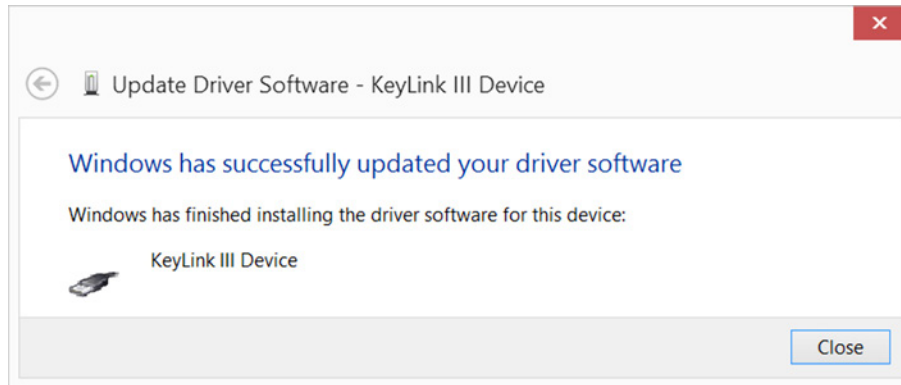
Click the **Next** button.

- 6** The driver will begin to install and the following message will appear.



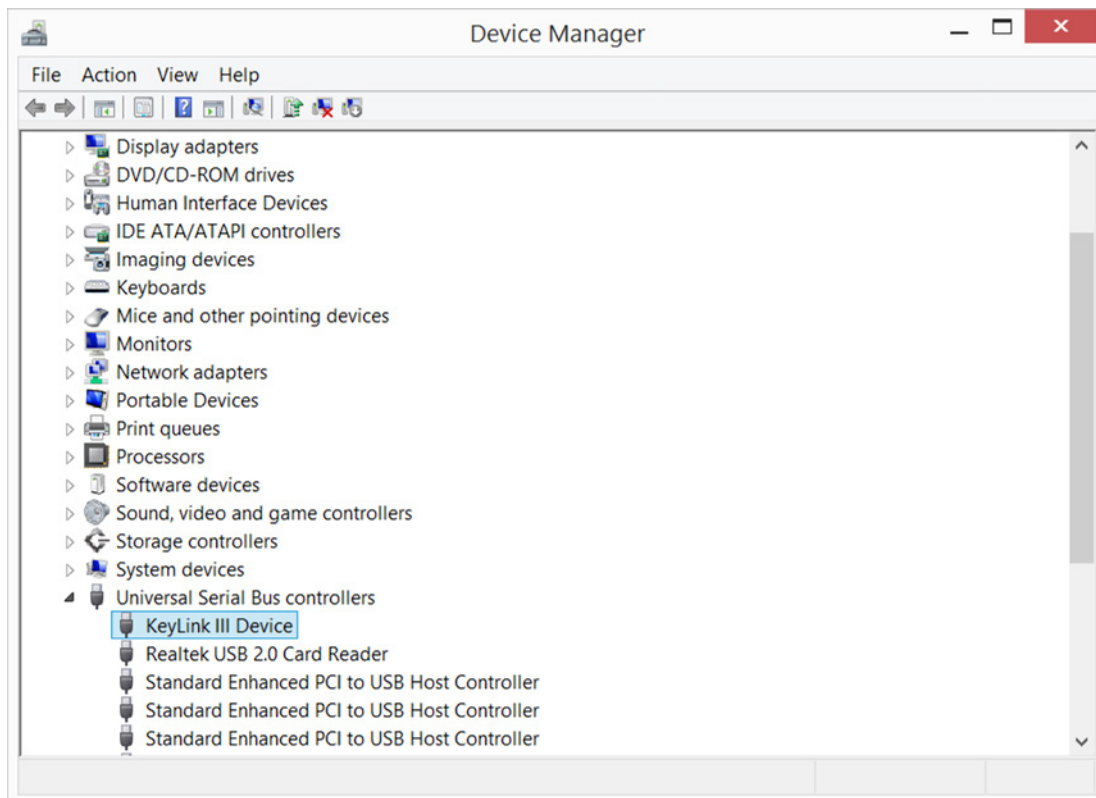
Click on **Install this driver software anyway**.

- 7 The driver installation completes and the following message will appear:



Click on the **Close** button.

- 8 The Keylink III Device now shows up as a connected device under the Universal Serial Bus controllers listing in Device Manager (as shown below).



- 9 The driver has been successfully installed.