

Series III Programmer

Installation Manual



Table of Contents

Connecting the Programmer	2
Installing the Device Driver	2
Installing the Application Software	5
Installing the Development Kit Software	6
Glossary	6

Connecting the Programmer

A programmer (also known as a reader or reader/writer) communicates with a host computer via USB, utilizing an A-to-B cable. USB Type-A and Type-B connectors and their signal pinouts are pictured here for reference. (See **Figure 1.**) Connect the Type-B end to the programmer and the Type-A end to the host computer. The programmer is powered by the USB port of the host computer and operates at USB full speed, which allows data rates up to 12 Mbits/s.

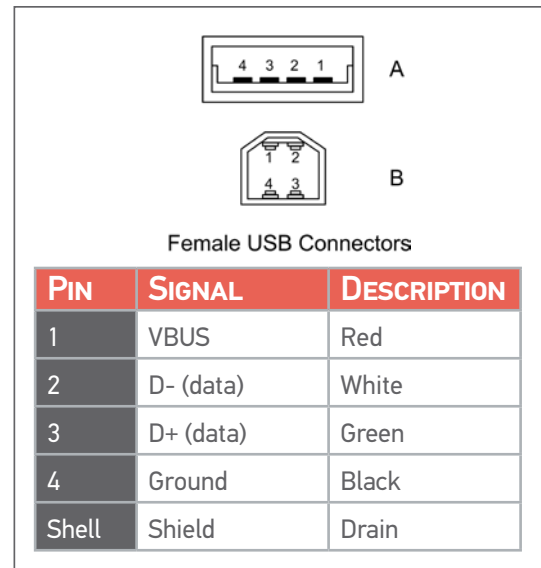


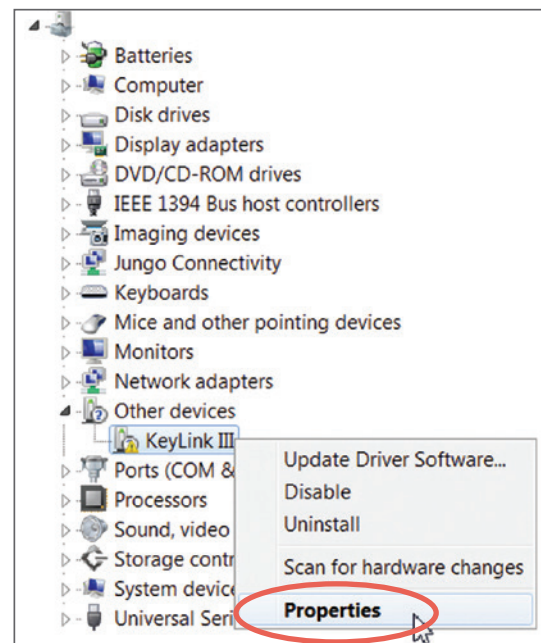
Figure 1: USB A/B Connectors and Pinout Chart

Installing the Device Driver

In order for the host computer to be able to communicate with the programmer, a suitable device driver will need to be installed on the host computer. The Microsoft Windows operating system will automatically detect the programmer when it is connected, but the appropriate device driver for the host computer's operating system (whether it be 32-bit or 64-bit) must be selected. A typical installation process for the Microsoft Windows 7, 64-bit operating system is described below. Installations on other Microsoft Windows operating systems will behave similarly.¹

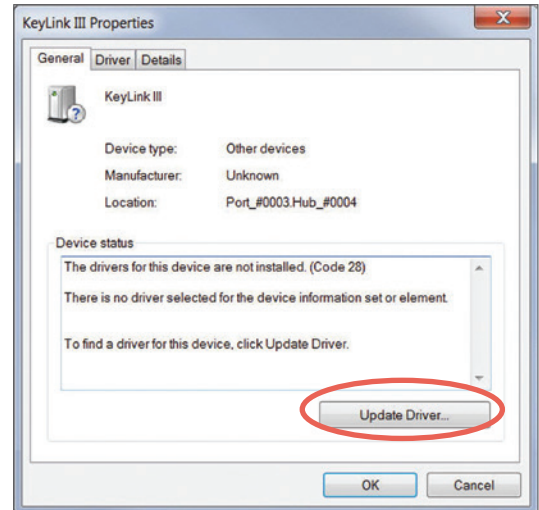
When first connected, the programmer will be displayed within **Device Manager** under **Other devices** as **KeyLink III**. To install the appropriate device driver, do the following:

- 1 Right-click on **KeyLink III** and select **Properties**. See figure on right.

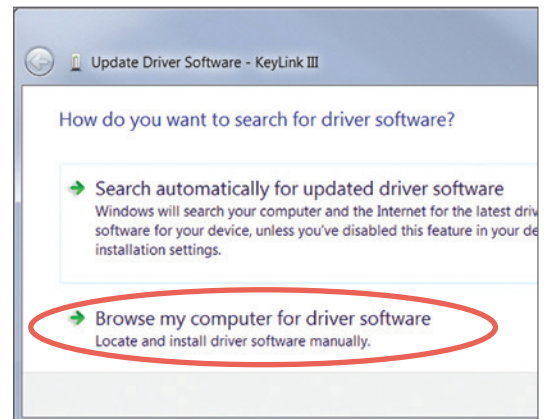


¹. Series III programmers support the following Windows operating systems: Windows XP, Windows 7, Windows 8 and Windows 10.

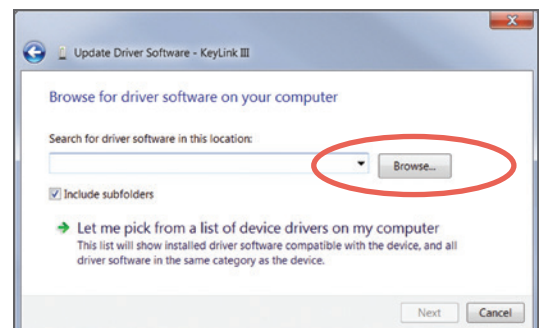
2 Click on the button labeled **Update Driver**.



3 Select **Browse my computer for driver software**.



4 Click the **Browse** button.

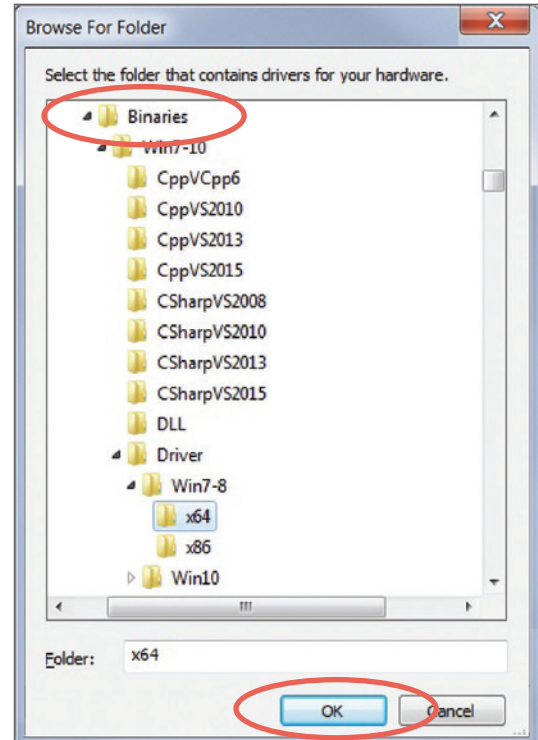


5

From the **Binaries** directory of the CD/DVD, open the appropriate directory for the host computer's operating system.

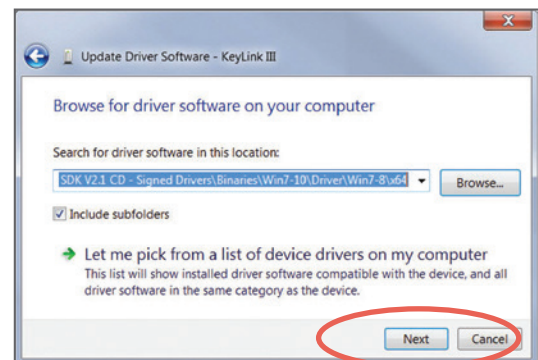
6

Select the appropriate folder within the **Driver** directory and operating system subdirectory (x64 for 64-bit, or x86 for 32-bit). Click the **OK** button.



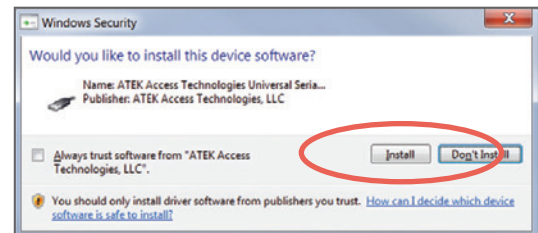
7

Click the **Next** button.

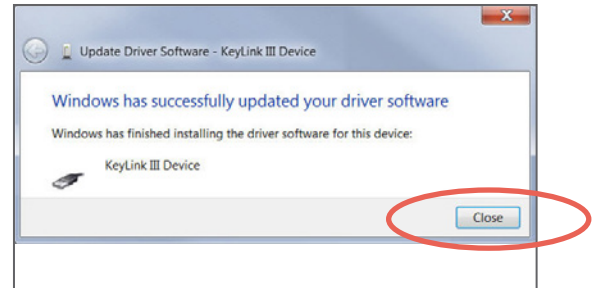


8

Click on the **Install** button.



- 9 A message window should display indicating that the driver software has been installed and that the device is working properly. Click the **Close** button.



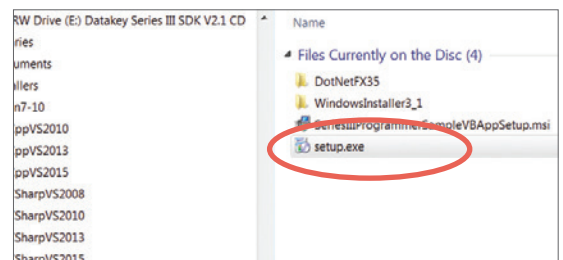
- 10 Within **Device Manager**, the programmer should now appear under the **Universal Serial Bus controllers** as **KeyLink III Device**.



Installing the Application Software

There are a variety of GUI applications from which to choose that are sorted according to intended operating system, programming language and Microsoft Visual Studio version with which the application was developed.

- 1 Select the folder that corresponds to your choice of available applications from within the **Installers** directory of the CD/DVD. Then double-click on the **setup.exe** file contained within that folder. (See the Operation Manual for descriptions of the applications.)



Follow the instructions of the setup wizard.

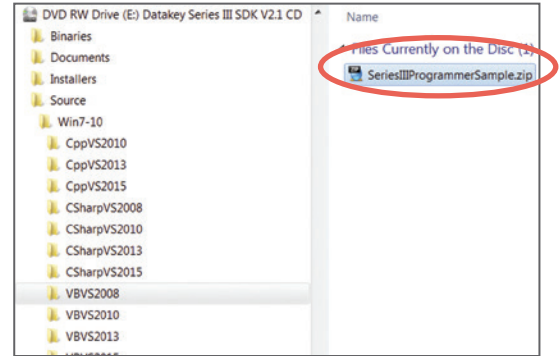
- 2 When the installation completes, the Datakey Series III Programmer desktop icon should appear.



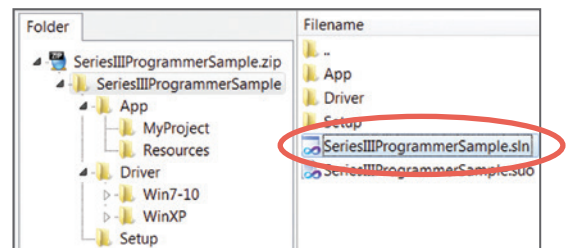
Installing the Development Kit Software

When a development kit is purchased, the development kit CD/DVD comes with the complete source code – including the solution, project, and installer for each of the compiled applications. The solutions are sorted according to the intended operating system, programming language and Microsoft Visual Studio version used in their development.

1 From within the **Source** directory of the CD/DVD, select the folder that corresponds to the desired solution. Then copy and/or extract the **SeriesIIIProgrammerSample.zip** file contained within that folder to the appropriate development directory. See the Operation Manual for descriptions of the applications.



2 Using the appropriate version of Microsoft Visual Studio, open the **SeriesIIIProgrammerSample.sln** (solution) file. Examine, edit, and rebuild the solution as needed.



Glossary

ACRONYMS/ABBREVIATIONS	
Mbits/s	Megabits per second – may indicate a multiplier of 10^6 (1,000,000) or 2^{20} (1,048,576) bits per second
USB	Universal Serial Bus
CD	Compact Disc
DVD	Digital Video Disc
GUI	Graphical User Interface

223-0157-000 Rev. A 4/18

Microsoft is a registered trademark of Microsoft Corporation. Windows is a trademark of Microsoft Corporation. All other brand names and product names used in this manual are trademarks, registered trademarks, or trade names of their respective holders.

ATEK Access Technologies
10025 Valley View Road, Ste. 190
Eden Prairie, MN 55344 U.S.A.

PH: 1.800.523.6996
FAX: 1.800.589.3705
+1.218.829.9797

www.atekaccess.com



Access the power of technology.